



Technical Specifications

| Essential Performance | |
|-----------------------|--|
| Magnification | 1~28X (C3A); 1~ 36X (C6A) |
| Operation distance | 200mm - 300mm |
| Illumination | ≥1600 lx |
| Field of view | 3X: ≥φ80 mm OR ≥16.5° 18X: ≥φ12 mm OR ≥2.5° |

| Other Performance Specifications | |
|----------------------------------|----------------------------|
| Pixel | 44000 (PAL), 380000 (NTSC) |
| Focus mode | Manual, Auto |
| Output signal | S-Video |
| Video mode | PAL/ NTSC |
| System resolution | ≥500 TVL |
| Space resolution | ≥10lpmm |
| Image geometric distortion | <3% |
| Camera light source | White loop group LED light |

| | |
|----------------|--|
| White balance | Auto, Manual |
| Imaging mode | White light (3 levels) Electronic green filter (3 levels) |
| SNR | ≥ 50 dB |
| Depth of field | 6X: ≥120 mm 18X: ≥6mm |

| Working | |
|-----------------------|----------------------------------|
| Temperature: | +5 °C~ +40 °C (+41 °F~ +104 °F) |
| Relative Humidity: | 25% RH ~ 80% RH (non-condensing) |
| Atmospheric Pressure: | 86 kPa ~ 106 kPa |

| Power Supply | |
|----------------------|-----------------|
| Operating Voltage: | 100 V - 240 V~ |
| Input Current: | 400 mA - 200 mA |
| Operating Frequency: | 50Hz / 60Hz |

Service is Powered by:

Service Helpline
1800-425-235

CERTIFIED ISO 13485:2003, ISO 9001:2008 COMPANY

BPL Medical Technologies Private Limited
Regd. Office: 11th KM, Bannerghatta Road, Arakere, Bangalore - 560076, India.
Toll Free: 1800-4252355
For Enquiries: sales.medical@bpl.in
CIN: U33110KA2012PTC067282

© 2017 BPL Medical Technologies Private Limited. All rights reserved. BPL Medical Technologies Private Limited reserves the right to make changes in product features, specifications, aesthetics and/or to discontinue the same at any time without notice or obligation



Happier Living Everyday



Follow us on

BMTPL:SALT:03:17:6PG

BPL Medical Technologies

Enabling Precise Examinations

Digital Video Colposcope

BPL **ColpoView C1**



Features



Superior Image clarity

High-resolution camera and fast auto focussing system for precise cervical examination



Advanced Imaging Options

Real time display of magnification for capturing finer details and full screen display



LED lighting

Cold LED lighting ensures reproduction of the original view of the tissue



User-friendly operations

User-friendly keyboard and remote control option enabled for convenience



Test timer

Acetic acid and iodine reaction test timer to capture the right image for diagnosis



Green filter

Electronic green filter enhances vascular image display without compromise of illumination

Image Management Workflow



Clinical Images

Original Squamous Epithelium



Polyp



Tumour or Neoplasm



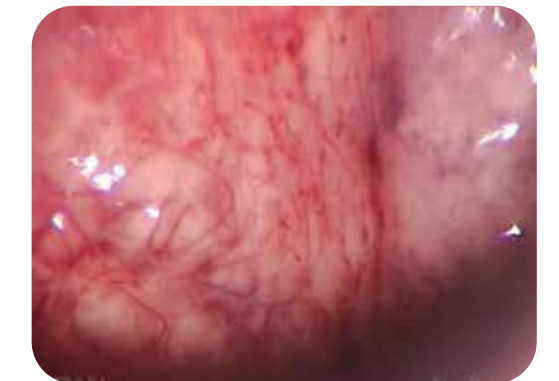
Nabothian Cysts



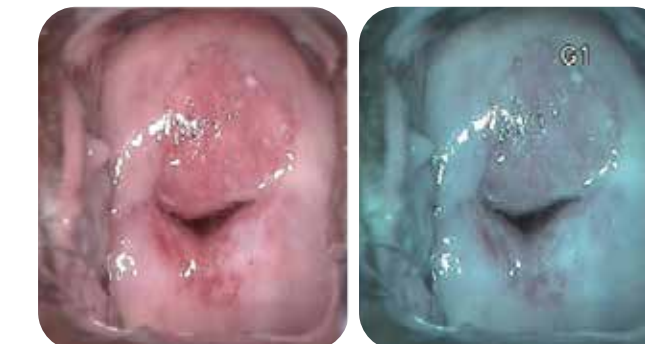
Columnar Epithelium



Atypical Vessels



Electronic Green Filter



Acetic Acid & Iodine Reaction

